

MONTHLY MEMBERSHIP PROGRESS REPORT

District 322 B1

Results as of: 12/31/2023

GMT:

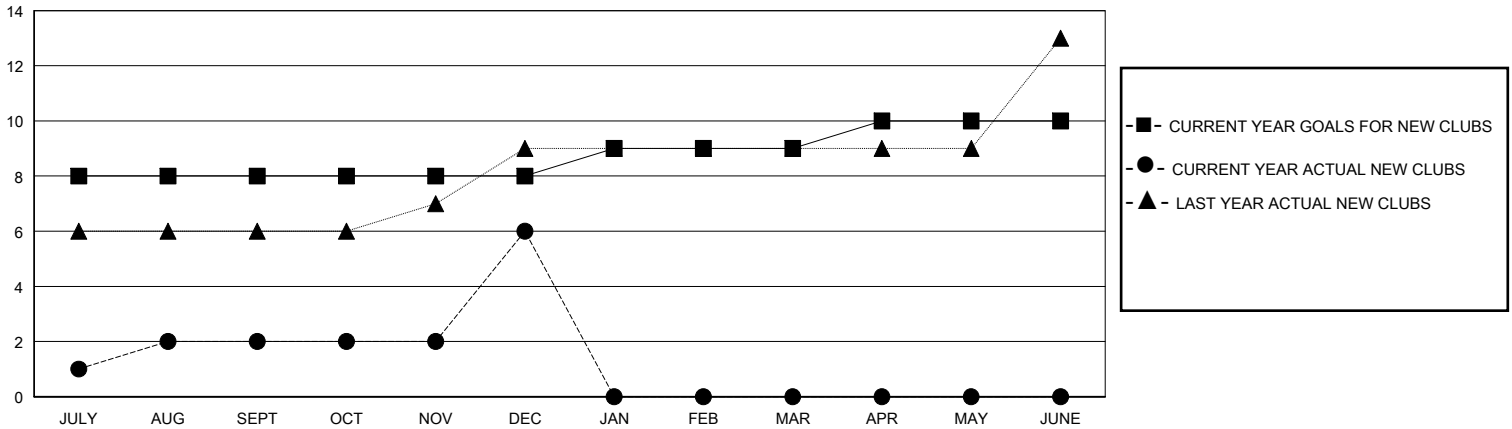
LOCATION INDIA

GMT CA

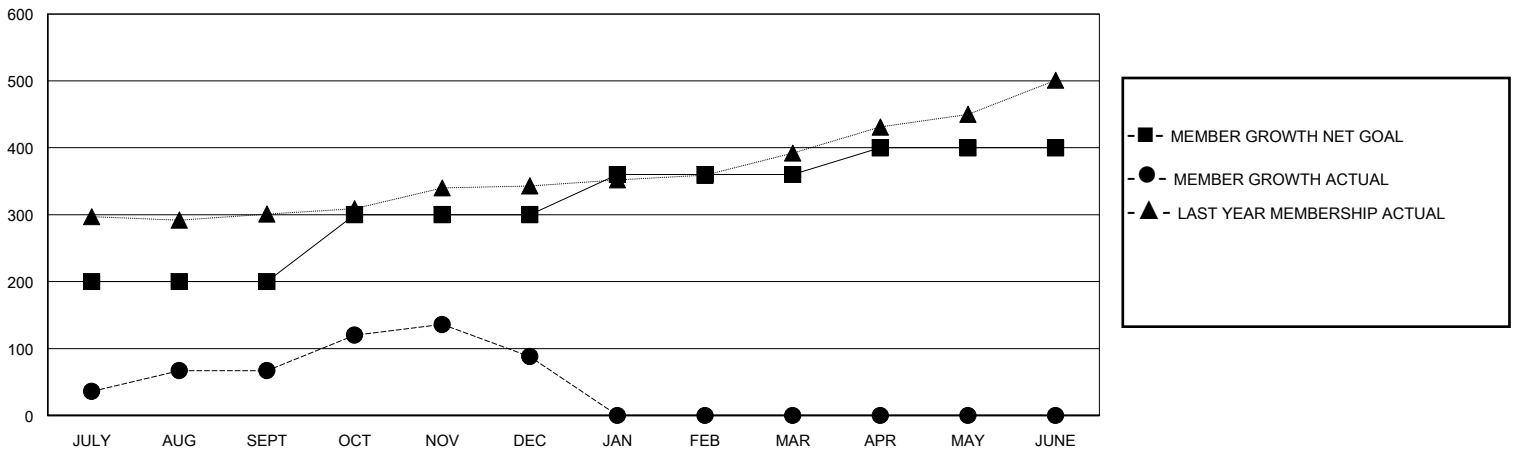
Clubs			
RESULTS FOR 2023-2024			
QUARTER	NEW CLUB GOAL	NEW CLUBS	DROPPED CLUBS
JULY/AUG/SEPT	8	2	2
OCT/NOV/DEC	0	4	4
JAN/FEB/MAR	1	0	0
APR/MAY/JUNE	1	0	0

Members			
RESULTS FOR 2023-2024			
QUARTER	MEMBER GROWTH NET GOAL	MEMBER GROWTH ACTUAL	DROPPED MEMBERS ACTUAL (including transfers)
JULY/AUG/SEPT	200	230	151
OCT/NOV/DEC	100	295	270
JAN/FEB/MAR	60	0	0
APR/MAY/JUNE	40	0	0

GOALS AND ACTUAL NEW CLUBS CUMULATIVE



GOALS AND ACTUAL MEMBERS CUMULATIVE



DROPPED CLUBS: 6 DROPPED MEMBERS DECEASED 9 CLUB CANCELLED 71 OTHER 341 TOTAL 421	59 CLUBS OF 93 ADDED 1 OR MORE NEW MEMBERS CLICK HERE FOR CUMULATIVE MEMBERSHIP DATA	GENDER DISTRIBUTION MALE 2,469 (64.26%) FEMALE 1,373 (35.74%)
	TOTAL FAMILY UNIT MEMBERS 1,828 FAMILY MEMBERS PAYING HALF DUES 1,056	